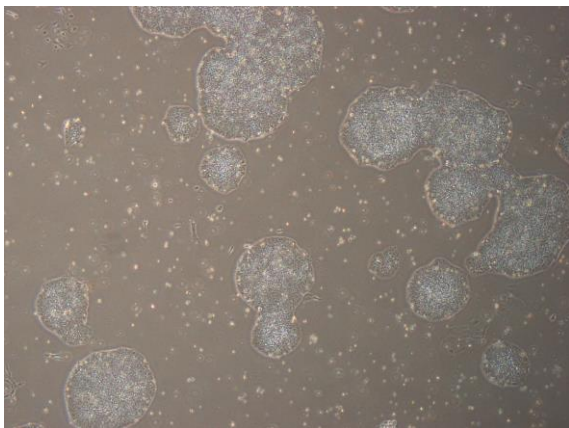
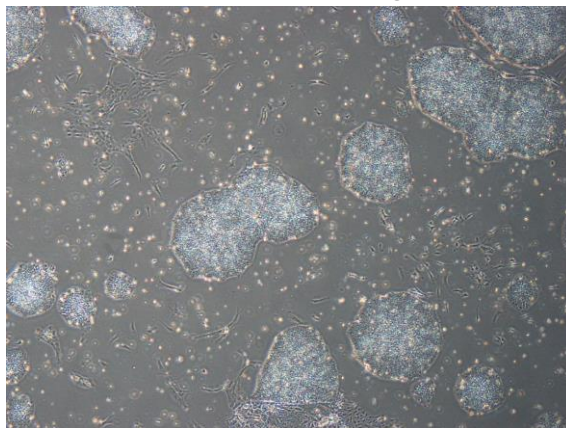


【 CiRA-j-1263 】 Morphology of iPSC colonies

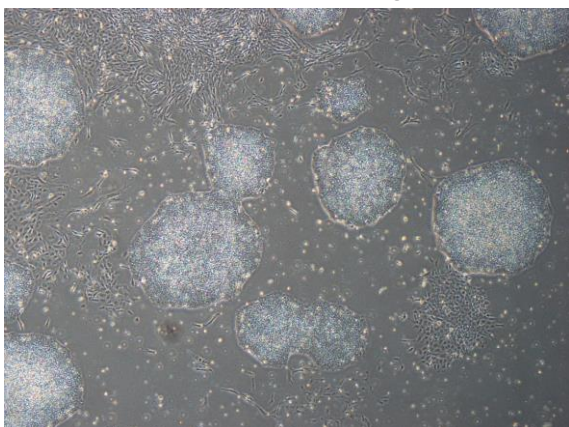
CiRA-j-1263-A: passage-3



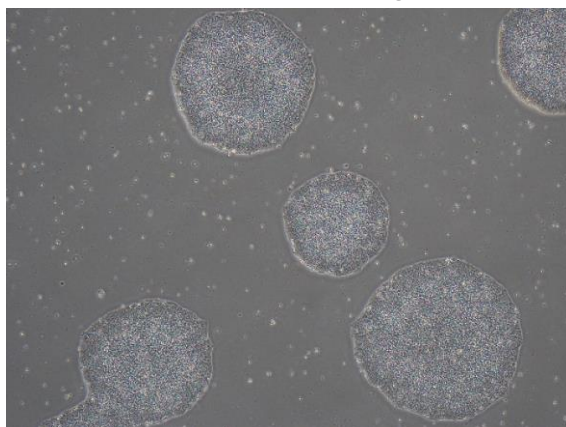
CiRA-j-1263-B: passage-3



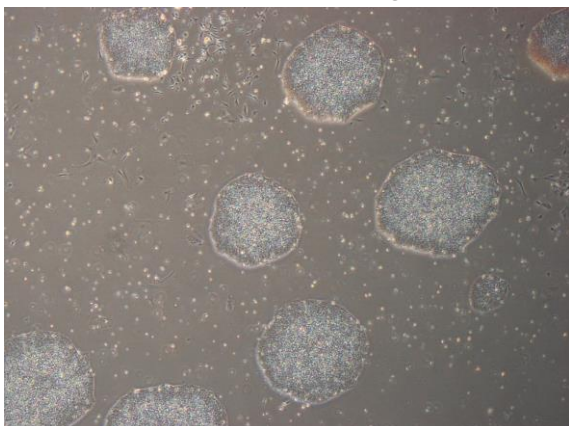
CiRA-j-1263-C: passage-3



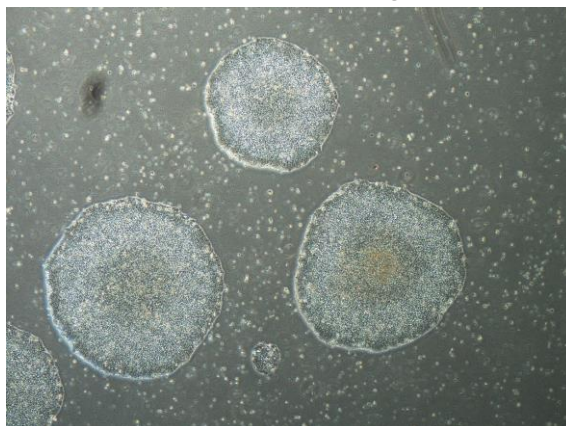
CiRA-j-1263-D: passage-3



CiRA-j-1263-E: passage-3



CiRA-j-1263-F: passage-3



(All images were captured at 4x magnification)